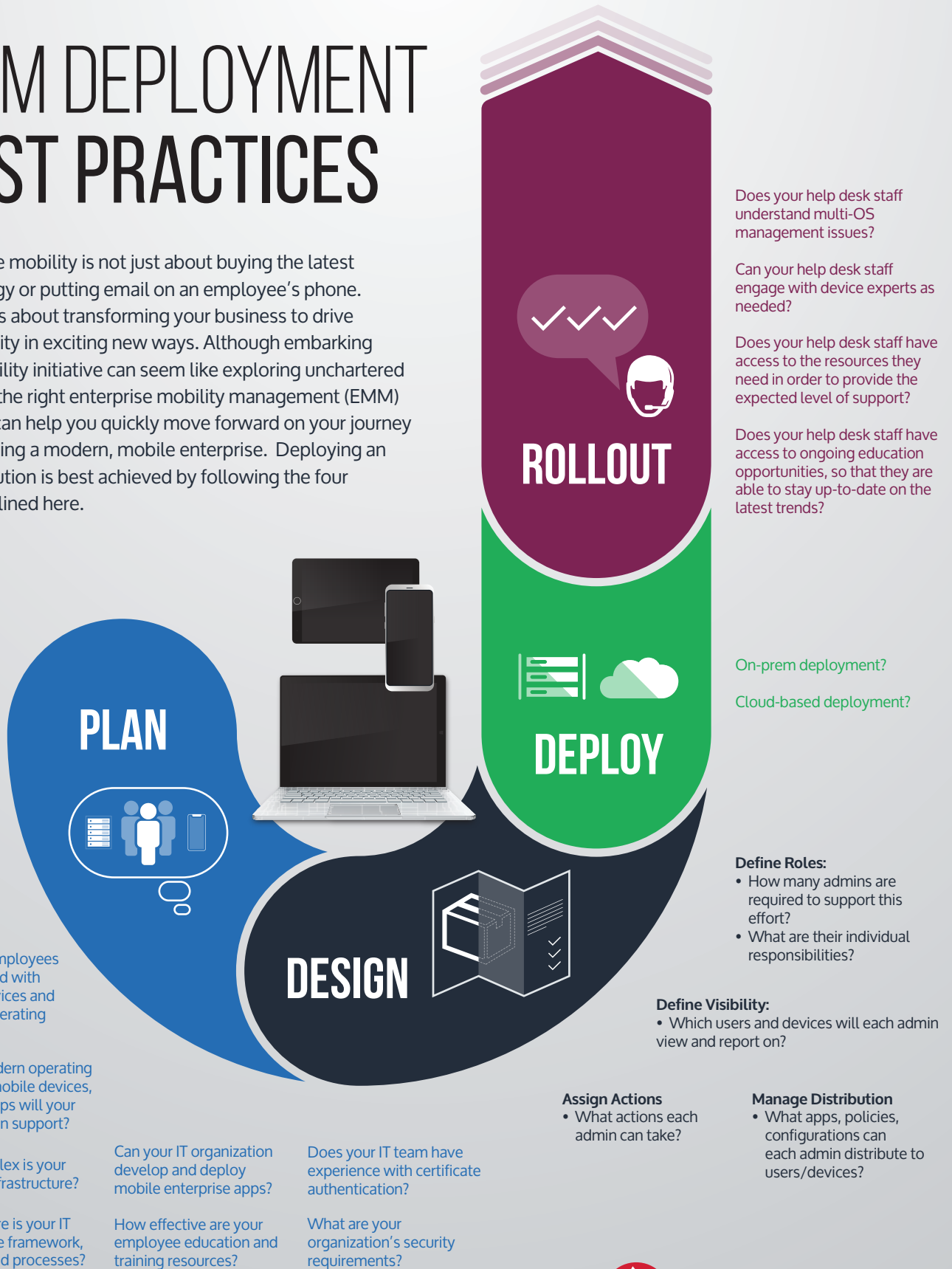


EMM DEPLOYMENT BEST PRACTICES

Enterprise mobility is not just about buying the latest technology or putting email on an employee's phone. Mobility is about transforming your business to drive productivity in exciting new ways. Although embarking on a mobility initiative can seem like exploring uncharted territory, the right enterprise mobility management (EMM) solution can help you quickly move forward on your journey to becoming a modern, mobile enterprise. Deploying an EMM solution is best achieved by following the four steps outlined here.



PLAN



Are your employees experienced with mobile devices and modern operating systems?

Which modern operating systems, mobile devices, and desktops will your organization support?

How complex is your network infrastructure?

How mature is your IT governance framework, policies, and processes?

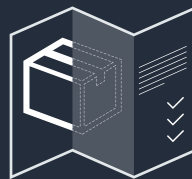
Can your IT organization develop and deploy mobile enterprise apps?

How effective are your employee education and training resources?

Does your IT team have experience with certificate authentication?

What are your organization's security requirements?

DESIGN



DEPLOY

On-prem deployment?
Cloud-based deployment?

Define Roles:

- How many admins are required to support this effort?
- What are their individual responsibilities?

Define Visibility:

- Which users and devices will each admin view and report on?

Assign Actions

- What actions each admin can take?

Manage Distribution

- What apps, policies, configurations can each admin distribute to users/devices?



ROLLOUT

Does your help desk staff understand multi-OS management issues?

Can your help desk staff engage with device experts as needed?

Does your help desk staff have access to the resources they need in order to provide the expected level of support?

Does your help desk staff have access to ongoing education opportunities, so that they are able to stay up-to-date on the latest trends?



MobileIron

MobileIron enterprise mobility management (EMM) enables your employees to enjoy seamless access to business apps and data through secure mobile devices, desktops, and cloud services while still maintaining complete control over their privacy.



Mobile Security	Silver	Gold	Platinum
On-prem and cloud-based EMM deployment options	✓	✓	✓
Sentry is an inline gateway that manages, encrypts, and secures traffic between the mobile device and back-end enterprise systems.	✓	✓	✓
Apps@Work is an enterprise application storefront that manages both in-house developed apps and third-party business apps that can be delivered to users.	✓	✓	✓
AppConnect is a secure business app container with app-specific VPNs for AppConnect-enabled apps.		✓	✓
Email+ is a secure mobile productivity apps package that includes email, contacts, calendar, and tasks for iOS and Android devices.		✓	✓
Docs@Work enables you to access, annotate, share, and view documents across a variety of email, on-prem, and cloud content management systems.		✓	✓
Web@Work is a secure enterprise mobile browser that enables end users to access internal web resources quickly and easily.		✓	✓
Help@Work allows users to share their screens with a help desk agent for more efficient troubleshooting and faster problem resolution.			✓
Tunnel provides per-app VPN capabilities so that you can authorize specific apps to access corporate resources behind the firewall without any end-user intervention.			✓
MobileIron Monitor is a comprehensive, dashboard-based solution that allows you to maintain the health of all your mission-critical MobileIron EMM components.			✓
ServiceConnect Integrations enable you to streamline IT workflows with the MobileIron App for Splunk Enterprise and integrations with ServiceNow.			✓
MobileIron Bridge allows you to leverage existing Group Policy Objects (GPO) scripts to enable granular security and management of Windows 10 PCs.	Add on SKU, requires MobileIron EMM bundles		
MobileIron Access provides secure, conditional access control for cloud services such as Microsoft Office 365, Salesforce, G Suite, Box, and others.	Add on SKU, requires MobileIron EMM bundles		

MobileIron Enables Your Modern, Mobile Enterprise



Harness the power of mobile devices to secure corporate data, drive employee productivity, and enable business innovation.
<https://www.mobileiron.com/en/solutions/enterprise-mobile-management-emm>



Secure, conditional access control for cloud services such as Microsoft Office 365, Salesforce, G Suite, Box, and others.
www.mobileiron.com/en/access



Comprehensive, dashboard-based solution that allows you to maintain the health of all your mission-critical MobileIron EMM components.
www.mobileiron.com/en/monitor



Leverage existing Group Policy Objects (GPO) scripts to enable granular security and management of Windows 10 PCs.
www.mobileiron.com/en/bridge



401 East Middlefield Road • Mountain View, CA 94043
www.mobileiron.com • globalsales@mobileiron.com

Tel: +1.877.819.3451
 Fax: +1.650.919.8006